

The Chamber
GREATER LEHIGH VALLEY CHAMBER OF COMMERCE



ANNUAL MEETING

Wednesday, November 10, 2021

Wind Creek Event Center

Presented by:

Capital 



With a Capital Blue Cross BlueJourney plan, you could have all of your Original Medicare benefits, PLUS...

- Prescription drug coverage as low as \$0
- Dental coverage that includes root canals and crowns
- Vision and hearing coverage
- SilverSneakers® fitness membership at no cost
- Up to \$300/year on a flexible debit card to spend on over-the-counter purchases*
- Low copay for primary care physician visits

AND MUCH MORE

All this in one simple plan, with monthly premiums **starting as low as \$0.**



Get your **FREE** information kit by calling **888.989.9015** (TTY: 711) 8 a.m. to 6 p.m., Monday–Friday with extended hours Oct. 1–Dec. 7, or by visiting **[CapitalBlueMedicare.com/great](https://www.CapitalBlueMedicare.com/great)**.

**Capital Blue Cross
Medicare**



*At participating retailers.

SilverSneakers® is a program of Tivity Health. On behalf of Capital Blue Cross, Tivity Health assists in the administration of this fitness program. Tivity Health is an independent company. BlueJourney PPO is offered by Capital Advantage Insurance Company*, a Medicare Advantage organization with a Medicare contract. BlueJourney HMO is offered by Keystone Health Plan® Central, a Medicare Advantage organization with a Medicare contract. Enrollment in BlueJourney PPO and BlueJourney HMO depends on contract renewal. Capital Blue Cross and its subsidiaries Capital Advantage Insurance Company and Keystone Health Plan Central are independent licensees of the Blue Cross Blue Shield Association. Communications issued by Capital Blue Cross in its capacity as administrator of programs and provider relations for all companies.

THE PEOPLE YOU KNOW
THE NEWS
YOU TRUST



Your *life*. Your *world*. Your *News*.



Welcome & Prizes!

Jeff Trainer, *Owner, Wind Creek Event Center*

Opening Act

Tony Iannelli, *President & CEO, The Chamber*

Top Sponsor & Elected Official Recognition

Frank Facchiano, *COO & EVP, The Chamber*

Milestone Award - 25 years

Crayola Experience

Presented by Luis Campos, *City Administrator, City of Easton*

Fly Local Prize Giveaway

Tom Stoudt, *Executive Director, Lehigh Valley International Airport*

Milestone Award - 60 years

Lehigh Valley Planning Commission

Presented by Laurie Gostley Hackett,
Director of Community Relations & Philanthropy, Air Products

Gold Sponsor & Elected Official Recognition

Lauren Spence, *VP Major Events, The Chamber*

Business Matters LIVE!

Tony Iannelli, *President & CEO, The Chamber*
US Senator Pat Toomey

Milestone Award - 100 years

PPL

Presented by Matt Tuerk

DEI Collaborative Presentation

Danielle Joseph, *EVP, Diversity Councils, The Chamber*
Alison Pickel, *SVP Member Relations, The Chamber*

Volunteer of the Year Award

Tom Groves, CEO, Equinox Benefits Consulting
Presented by Anne Baum, *Lehigh Valley Executive, Capital Blue Cross*

Silver Sponsor Recognition

Gina Martens, *SVP Member Relations & Sales, The Chamber*

Business News Year in Review

Rob Vaughn, *Anchor, 69 WFMZ-TV*

Bronze Sponsor Recognition

Brittany Keal, *Director of Diversity Councils, The Chamber*

Business of the Year Award

Boyle Construction Management

Presented by Mary Lisicky, *VP & Certified Financial Planner, Morgan Stanley & Chair, Chamber Board of Governors*

Closing

Mary Lisicky & Your Chamber Staff!

Connect with us!

-  Lehigh Valley Chamber
-  @glvcc
-  Lehigh Valley Chamber
-  lehighvalleychamber
-  Lehigh Valley Chamber
-  Lehigh Valley Chamber



BE THE BIGGEST THING OUT THERE.

 | adams



To find out more, call 610-266-9461, or e-mail kadar@adamsoutdoor.com.

You know your story,
let us bring it to life.
It all starts with video.



asrmedia
PRODUCTIONS



asrmediaproductions.com

THANK YOU

for 25 years of support, creative play, and colorful memories!



Milestone Award



25 years

The Chamber's Milestone Award honors exemplary businesses and organizations for their longevity and leadership in the economic and community development of the Lehigh Valley. The Milestone Award is presented to a member of The Chamber that has reached a significant landmark in operations, a high point of superior commitment to the community and that brings a notable measure of pride to The Chamber and the entire Lehigh Valley.

As part of a community affairs project to help revitalize the city's historic downtown in 1996, the then 20,000-square-foot Crayola Factory opened its doors in Easton, Pa . Soon, the center was attracting families from Pennsylvania, New Jersey, New York and beyond. The concept of a place where the magic of Crayola comes to life and children could express their creativity, explore art and technology, and experience color in a whole new way was a hit.

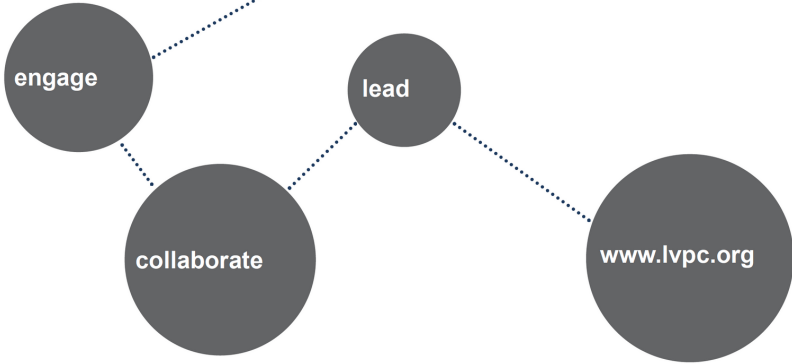
The reaction to the initial concept fueled a reimagining of the center. After extensive renovations in 2013, the center reopened as the Crayola Experience—a 65,000-square-foot family destination. Today's Crayola Experience Easton is larger than an NFL football field, housing more than 25 creative activities and attractions on four floors. Families can name and wrap their own Crayola crayon, bring art to life on a big screen, turn themselves into a coloring page, learn behind-the-scenes stories of some of Crayola's coolest innovations, and more. The destination also features live entertainment and The Crayola Store with the world's largest selection of Crayola products and unique souvenirs.

Now celebrating its 25th anniversary, Crayola Experience Easton has become the brand's flagship attraction with additional locations throughout the country. Crayola Experience has succeeded over the past quarter of a century because it offers families something exciting and meaningful. It will continue to reach new milestones because its concept to engage children's creativity and imagination, to play, and to color outside the lines is universal and timeless.

L V P C
Lehigh Valley Planning Commission



L V T S
Lehigh Valley Transportation Study



**responsible management, growth,
development, redevelopment + preservation
of the Lehigh Valley since 1961.**

CRYSTAL



SIGNATURES

Milestone Award



Lehigh Valley Planning Commission

60 years

The Chamber's Milestone Award honors exemplary businesses and organizations for their longevity and leadership in the economic and community development of the Lehigh Valley. The Milestone Award is presented to a member of The Chamber that has reached a significant landmark in operations, a high point of superior commitment to the community and that brings a notable measure of pride to The Chamber and the entire Lehigh Valley.

The Lehigh Valley Planning Commission (LVPC) addresses current and ongoing regional planning issues, while fostering cooperation between governments, private sector and non-profit organizations and the general public. As the bi-county planning agency for Lehigh and Northampton counties, the LVPC works closely with a variety of groups, including the 62 municipal governments.

This year, the Lehigh Valley Planning Commission celebrates 60 years of growth and resiliency. The concept seems so simple now, but the idea that planning would be more effective if conducted as a single region, rather than two separate counties, was rather innovative when the Joint Planning Commission (JPC) of Lehigh and Northampton Counties was first formed in the summer of 1961. That concept of joint planning would soon yield Pennsylvania's first metropolitan area plan and help guide one of the state's most consistently growing regions. As the Lehigh Valley Planning Commission celebrates its 60th anniversary, a look back over time reveals an extraordinary history of planning accomplishments, strengthened by regional and local collaboration and public engagement.



5,200 WEEKS
of
SERVICE

100 YEARS
of
PROGRESS



36,500 DAYS
of
DEDICATION



**THANK YOU TO THE LEHIGH VALLEY
CHAMBER OF COMMERCE FOR RECOGNIZING
PPL WITH THE MILESTONE AWARD.**

We are grateful for the last 100 years and look forward to the next. Thank you to all of our customers and employees past and present who have helped us reach this incredible milestone.

Milestone Award



100 years

The Chamber's Milestone Award honors exemplary businesses and organizations for their longevity and leadership in the economic and community development of the Lehigh Valley. The Milestone Award is presented to a member of The Chamber that has reached a significant landmark in operations, a high point of superior commitment to the community and that brings a notable measure of pride to The Chamber and the entire Lehigh Valley.

With its headquarters in Allentown, Pennsylvania, Pennsylvania Power & Light Company (PP&L) was created in the 1920s through the consolidation of eight electric companies with 62 power plants serving central and eastern Pennsylvania. Born during a critical time in the United States, PP&L helped power the growth of industry and communities in central and eastern Pennsylvania by transforming the region's patchwork of local electric grids into a vast network of generation, transmission and distribution facilities.

PPL has adapted to every major shift in the energy industry, meeting demand with operational excellence and tackling difficult challenges with innovative solutions. From the surge of electric appliances and the growth of industry in the 1940s & 1950s to the energy conservation programs of the 1970s and the deregulation of power markets in the 1990s, PPL has been there – powering lives, communities, organizations, governments and businesses day in and day out.

Today, PPL and its family of companies are building a smarter, more reliable and more resilient energy grid. The company is investing in new technology that is reshaping electricity networks, enabling more distributed energy resources and advancing a cleaner energy future.



BENEFITS CONSULTING
UNDERWRITE • EVALUATE • ENGAGE



CONGRATULATIONS

to our Founder & CEO

Tom Groves
“Volunteer of the Year”

You inspire us with your leadership every day!

Equinox Benefits Consulting

402 State Avenue, Emmaus, PA 18049
610-366-3777 | www.equinoxbenefits.com

2021 Volunteer of the Year Award



Tom Groves

Chief Executive Officer, Equinox Benefits Consulting

The Volunteer of the Year Award gives the Chamber an opportunity to honor exemplary individuals for their long-term commitment and leadership to the Lehigh Valley and Chamber community. The award is presented to an individual who serves the Lehigh Valley community by serving The Chamber on boards or committees and who embraces involvement as an integral part of their Chamber membership.

Tom Groves is CEO and Partner of Equinox Benefits Consulting in Emmaus, Pennsylvania. Since founding Equinox in 2005, Tom has led the company to become one of the fastest growing companies in the region year over year by helping organizations of all sizes offer innovative, high-quality employee benefits solutions characterized by exceptional client service and member engagement.

An active participant on several community boards, Tom began a long-standing connection with the Greater Lehigh Chamber of Commerce as part of the Hispanic Chamber and has since become a member of GLVCC's Executive Board, serving as chair of the Public Policy Committee. Tom's deep commitment to the Lehigh Valley region extends into Equinox's mission as well, with the company and its employees providing support to various organizations and initiatives over the years.

Tom lives in Allentown with his wife, Haydemar, and their two children, Sofia and Joseph.

The
foundation of every project
starts with building
trust.



Proud of our team and honored to be
Business of the Year!



2021 Business of the Year



The Chamber's Business of the Year Award honors the Valley's premier businesses for their excellence, distinction, and leadership. The award recognizes a business that demonstrates excellent business operations, displays broad interest and involvement in community affairs, shows leadership in the economic and community development of the Lehigh Valley, and brings a notable measure of pride to The Chamber and the entire Lehigh Valley community.

Boyle Construction is celebrating 44 years of building better in the Lehigh Valley. Their long list of clients have trusted the Boyle team with many landmark projects around Eastern PA and Western NJ. They believe the foundation of every project starts with building relationships and trust, and 85% of their annual business comes from repeat clients. They pride themselves on being honest and transparent with clients, consultants, employees, and subcontractors.

Their history goes back to 1977 when Anthony Boyle and George Moore started Boyle & Moore as a general construction firm. With the rise of design-build and construction management in the 1980s, they added services and grew quickly. Tony became the sole owner in 1985 and Boyle Associates was born. Tony's son, Sean, took over the family business in 1996 as president and the company became Boyle Construction in 2001. Today, Sean's son Dylan plays a vital role in the company's leadership and its promising future.

Boyle Construction is fortunate to be the catalyst that transforms client's ideas and visions into reality every day. Most clients bring the Boyle team on board at the project's inception. Diving into the details, the team explores the best way to expand and grow their client's business or services, while staying on budget and on schedule. Whether it's a new facility or renovating and expanding an existing building, they work hand in hand with the project team to exceed expectations.

Boyle Construction is excited for the future of the Lehigh Valley and the opportunities to create places for the community to live, work, and play.

About The Chamber

With nearly 5,000 members who employ more than 200,000, The Chamber is the largest in Pennsylvania and New Jersey, and the 7th largest nationwide. The Chamber is comprised of 32 chambers, councils, and committees.

The Chamber Board of Governors

Regional Chambers, Councils, & Organizations

- Allentown Chamber
- Downtown Allentown Business Alliance
- Bethlehem Chamber
- Downtown Bethlehem Association
- Carbon County Chamber
- East Penn Chamber
- Easton Area Chamber
- Emmaus Main Street Partners
- Forks Business Association
- Greater Bath Area Chamber
- Greater Northern Lehigh Chamber
- Hellertown-Lower Saucon Chamber
- Nazareth Chamber of Commerce
- Northampton Area Chamber
- Phillipsburg Area Chamber
- Pocono Chamber
- Southern Lehigh Chamber
- Western Lehigh Chamber
- Whitehall Area Chamber

Business & Diversity Councils

- African American Business Leaders Council
- Ambassadors Council
- Business Council
- Hispanic Chamber of the Lehigh Valley
- LGBTQ Business Council
- Nonprofit & Business Partners Council
- Veterans & Military Council
- Women's Business Council
- Young Professionals Council

Public Policy Committee

- Energy & Environment Committee
- Healthcare Committee
- Manufacturing Council
- Tax & Regulatory Committee
- Transportation Committee

Main Street Lehigh Valley - The Chamber Foundation

The Chamber Board of Governors - Executive Committee

Executive Committee Officers

Mary Lisicky, Chair

Morgan Stanley

Tom Groves, Vice Chair
Equinox Benefits Consulting

Tony Iannelli, President & CEO
The Chamber

Jeffrey Berdahl, Treasurer
Regan, Levin, Bloss, Brown & Savchak, P.C.

Buddy Lesavoy, Counsel
Lesavoy Butz & Seitz LLC

John Hayes, Immediate Past Chair
New Tripoli Bank

Executive Committee

Michael Butz
Alvin H. Butz, Inc.

Murtaza Jaffer
EBC Printing

Luis Campos
City of Easton

Donna LoStocco
First Commonwealth Federal Credit Union

Nancy Dischinat
Workforce Board Lehigh Valley

Bret Ludlow
Liquid

Barry Fisher
69 WFMZ-TV & wfmz.com

Helene Meissner
Norwescap Food Bank

Dorota Gasienica-Kozak
King, Spry, Herman, Freund & Faul, LLC

Carol Obando-Derstine
PPL Electric Utilities

Laurie Hackett
Air Products

Dr. Tina Richardson
Penn State Lehigh Valley

Jonathan Huerta
King, Spry, Herman, Freund & Faul, LLC

George Roberts
George Roberts Productions

The Chamber Board of Governors

Paul Anthony

International Brotherhood of Electrical Workers
(IBEW) Local Union #375

Ismael Arcelay

Lehigh University
Hispanic Chamber Chair

Phillips Armstrong

County of Lehigh

Christopher Barrett

Pocono Mountain Visitors Bureau
Pocono Chamber Chair

Anne Baum

Capital Blue Cross
Past Chair of the Chamber

Bill Bloss

Regan, Levin, Bloss, Brown & Savchak, P.C.
Healthcare Committee Chair

Dan Bosket

Community Action Committee of The Lehigh Valley
African American Business Leaders Council Co-Chair

Becky Bradley

Lehigh Valley Planning Commission

Cara Butz

ESSA Bank & Trust
Whitehall Area Chamber Chair

Kelly Chando

St. Luke's University Health Network

Josh Clarkson

American Bank
Western Lehigh Chamber Chair

Donald Cunningham

Lehigh Valley Economic Development Corp.

Larry DelHagen

Stifel, Nicolaus and Company, Inc.
East Penn Chamber Chair

Phil Donatelli

RCN of Pennsylvania

Ralph Eberhardt

Michael Baker International
Transportation Committee Chair

Jim Ferry

ESSA Bank & Trust
Allentown Chamber Chair

Christopher Fisher

St. Luke's University Health Network
Forks Business Association Chair

Russell Fletcher

Mishka Premium Vodka

Marta Gabriel

Office of U.S. Senator Patrick Toomey

Michael Gibson

Ondra-Huyett Associates, Inc.
Energy & Environment Committee Chair

Murat Güzel

Natural Food Group

Mark Haldaman

Embassy Bank for the Lehigh Valley
Northampton Area Chamber Chair

Jon Hall

Ambassadors Council Chair

Patricia Handwerk

The Harry Packer Mansion
Carbon Chamber Chair

The Chamber Board of Governors

Tina Hasselbusch

Social T Marketing
Women's Business Council Chair

Frank Heston

Riverview Bank
Main Street Lehigh Valley Foundation
Chair

Ron Jerdon

Jerdon Construction Services LLC
Veterans & Military Council Chair

David Jones

Homestead Smart Plans

Katarah Jordan

James Lawson Freedom Schools

Mary Kositz

ESSA Bank & Trust
Greater Bath Area Chamber Chair

Kati LaBuda

Steel Valley Investment Group
of Raymond James
Southern Lehigh Chamber Chair

Kurt Landes

Lehigh Valley IronPigs / Coca-Cola Park

Joanne Leasure

Day One Accounting and Financial
Services, LLC
African American Business Leaders
Council Co-Chair

George Lehr

First United Land Transfer, Inc.

Kevin Lewis

Eastern Atlantic States Regional
Council of Carpenters

Mike Lichtenberger

enTrust Merchant Services
Business Council Chair

Ryan Mackenzie

134th Legislative District

Juan Martinez

Don Juan Mex Grill

Marlea McAdoo

New Tripoli Bank
Emmaus Main Street Partners Chair

Lamont McClure

County of Northampton

Howard Meller

People First Federal Credit Union

Alex Michaels

Discover Lehigh Valley

Rebecca Newsom

Fulton Mortgage

Stephen Patterson

Univest Bank and Trust Co.
Past Chair of the Chamber

Michael Perry

Michael Perry Hair Studio

Tanya Ramirez

State Farm Insurance

Rob Ritter

Weichert Realtors
LGBTQ Business Council Chair

John Rosario

B & R Enterprises

The Chamber Board of Governors

Kimberlee Rosario

Truist Hellertown Bank

Ashley Russo

ASR Media Productions

Amy Saul

Moravian University
Nonprofit & Business Partners Council Chair

Diana Schipani

The Budd Agency, Inc.
Phillipsburg Area Chamber Chair

Candi Staurinos

Lehigh University
Bethlehem Chamber Chair

Tom Stoudt

Lehigh Valley International Airport

Ann Marie Supinski

AM Luxe Apparel

Carmen Toro

Beauty Alibi, LLC

Nancy Treskot

Keystone Technology, LLC
Greater Northern Lehigh Chamber

Ann Marie Vigilante

Langan Engineering &
Environmental Services, Inc.

Brian Wiersch

Patrick McNealis Insurance
& Financial Group
Young Professionals Council Chair

Dr. Sylvester Williams, IV

East Stroudsburg University

Michael Woodland

FASTSIGNS of Easton /
Dans Camera City
Nazareth Area Chamber Chair

Susan Worobec

Unity Bank
Easton Area Chamber Chair

**DEDICATED
PEOPLE
INNOVATIVE
MINDS
PROFESSIONAL
SERVICE**



Providing trusted legal counsel to the Lehigh Valley and beyond for nearly 50 years.

610.820.5450
grossmcginley.com

HHE

HOFFMAN HLAVAC & EASTERLY

ATTORNEYS AT LAW



LABOR AND EMPLOYMENT

COMMERCIAL LITIGATION

PERSONAL INJURY

PROUD TO BE A CHAMBER STRATEGIC PARTNER

1605 NORTH CEDAR CREST BOULEVARD
SUITE 517 | ALLENTOWN, PA
WWW.HHE-LAW.COM | 484-408-6001



**AIRPORT
TERMINAL**

ADVERTISING

FROM OUR DIGITAL NETWORK TO LARGE
FORMAT BANNERS TO INTERACTIVE
DISPLAYS, THERE ARE ENDLESS
OPPORTUNITIES TO PROMOTE
YOUR BRAND

MENTION "CHAMBER ANNUAL MEETING"
FOR A SPECIAL OFFER

FLY LOCAL ➤
ABE

SIGN THE FLY LOCAL PLEDGE TO:

HELP RETAIN CURRENT AIR SERVICE AT ABE

CREATE DEMAND FOR NEW AIR SERVICE AT ABE

SUPPORT OUR BUSINESS COMMUNITY AND HELP PROPEL
THE REGIONAL ECONOMY TO NEW HEIGHTS

FLYABE.COM/ADVERTISING
FLYABE.COM/PLEDGE
MARKETING@FLYABE.COM





Mobile Technology Graphics

*"Supplying Today's Events
with Tomorrow's Technology"*



Quick Setup HD Outdoor Video Walls

Your Solution for Covid Responsible Social Distanced Events

- 15ft x 25ft HD Display
- Built in Audio System
- Perfect for Employee Town-halls, Demo Days, Training Seminars



UHD Indoor LED Video Wall Rentals, Sales & Installs

- Custom designed to meet your project requirements
- Over 30 years of LED experience
- Seamless & High Brightness
- Local service & repair for all LED displays sold
- Perfect for Lobbies, Atrium, Boardrooms, Webcasting Studios

www.mtgdDisplays.com | (877) 392-4220

Proudly Based in Lehigh Valley, PA and
Servicing the Entire United States



PENN NATIONAL INSURANCE

Feel Secure®



Does *your* business insurance earn dividends?



Dividends paid.
More than
\$574,658

How It Works

Dividend earned is based on the total group premium and claims experience of eligible lines.

For example:

If group premium is:	\$1.2 Million
and group loss ratio is:	16%
Group dividend is:	15%
If member premium is:	\$20,000
Dividend earned will be:	\$3,000

Dividend payments are based upon program eligibility and are not guaranteed.

That's how much Greater Lehigh Valley Chamber members who take advantage of the Members Advantage Program have earned in dividends. By purchasing their business insurance through Penn National Insurance, our program members tell us that often the dividend pays for their membership – and then some.

Program Features

- ✓ All-lines dividend (excluding umbrella and bonds). Dividend payments are based on total group program premium and claims experience of eligible lines. As program grows, so does dividend potential.
- ✓ Enhanced coverages on auto, businessowners, property, workers' compensation, and general liability — giving you added protection at no additional cost.
- ✓ Equipment breakdown coverage automatically included with businessowners and property policies
- ✓ Information and services to help reduce losses — the payoff is greater dividend potential
- ✓ Outstanding, local claim and customer support service

*Subject to individual risk characteristics, loss experience and underwriting guidelines.



Want to know more?

Contact any independent agent representing Penn National Insurance or one of these fellow chamber members:

The Yuronic Agency - Program Administrator	(610) 770-6600
Brown & Brown of Lehigh Valley	(800) 634-8237
Budd Agency Inc.	(908) 859-2213
HMK Insurance Agency	(610) 868-8507
Kressler, Wolff & Miller, Inc.	(610) 258-9181
Lehigh Insurance Agency LLC	(610) 868-8762
McGriff Insurance Services	(610) 821-1640
Mearhoff Insurance Agency	(610) 258-0814
Miers Insurance	(610) 797-7900
Murray Securus	(610) 371-9505
Seltzer Group	(888) 366-1000
Uninvest Insurance, Inc.	(610) 966-1315



PENN NATIONAL
INSURANCE

Feel Secure®

www.PennNationalInsurance.com

An Equal Employment Opportunity/Affirmative Action Employer
©2021 Penn National Insurance 1.2021



At home or at work, we've got you covered.

RCN gives you the tools and services you
need to make meaningful connections.

For Your Home:

800.RING.RCN
rcn.com

For Your Business:

877.726.7000
rcn.com/business



IN THE TIME IT TOOK YOU TO GET TO THIS
PAGE IN THE PROGRAM BOOK, WE COULD
HAVE IMPROVED THE WAY YOUR OFFICE LOOKS.



(YUP. WE ARE THAT GOOD.)

*Service*MASTER
Clean[®]

By Round the Clock Cleaning

www.SMbyRTC.com

610-868-7900

Thank you to our sponsors!

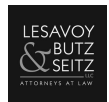
PRESENTING SPONSORS



PLATINUM SPONSORS



GOLD SPONSORS



Thank you to our sponsors!

SILVER SPONSORS



BRONZE SPONSORS



BEVERAGE



DESSERT



PHOTOGRAPHY



A/V



Proud Member of the Greater Lehigh Valley Chamber of Commerce

Cross-Media Advertising Solutions

Viamedia connects advertisers and audiences through cross-device strategies which include television, OTT, search, social, display, email and online video for your marketing campaigns.

Reach Your Customers On All Screens.



**viamedia**

A partner with:



610.625.3200 | viamediatv.com



WIND CREEK®
EVENT CENTER

DON'T JUST GO TO A CONCERT...

EXPERIENCE IT!



SARAH BRIGHTMAN - NOVEMBER 26



CHELSEA HANDLER - NOVEMBER 27



A MAGICAL CIRQUE CHRISTMAS - DECEMBER 1



BREAKING BENJAMIN - DECEMBER 3



FRANK CALIENDO - DECEMBER 4



PENN AND TELLER - DECEMBER 9



BRIAN REGAN - DECEMBER 10



35th ANNIVERSARY
MANNHEIM STEAMROLLER
Christmas
BY CHIP DAVIS
MANNHEIM STEAMROLLER CHRISTMAS - DECEMBER 11



TERRY FATOR - DECEMBER 12



BERT KREISCHER - DECEMBER 30

VISIT US ONLINE TO VIEW A FULL LIST OF UPCOMING EVENTS | WINDCREEKEVENTCENTER.COM | /THEWCEC

#INSURANCEGOALS



The Yurconic Agency, a Chamber Strategic Business Partner, can check **YUR** current business insurance to ensure it actually protects your assets. You might qualify for a better rate, better coverage, and even earn a possible dividend. Now that's #INSURANCEGOALS. Contact **YUR** agent to discuss your rate, today.



Call us today! 610.770.6600 | yurconic.com

BUSINESS | AUTO | HOME | HEALTH | LIFE | INSURANCE
VEHICLE REGISTRATION | DRIVER'S LICENSE SERVICES | NOTARY SERVICES

DISCOVER *your* BROOKside

THE LEHIGH VALLEY'S
FAMILY-ORIENTED,
PRIVATE COUNTRY CLUB

WEDDING CEREMONIES
& RECEPTIONS

BIRTHDAY &
ANNIVERSARY PARTIES

GOLF OUTINGS

BRIDAL & BABY
SHOWERS



Contact us for more info!

901 WILLOW LANE • MACUNGIE, PA
484.224.5484 • BROOKSIDECOUNTRYCLUB.ORG



ironton.com

Introducing the **i-fi Network!**
Stronger, faster and more reliable.



irontonglobal.com

Business **Cloud Phone Services**
Meet the demands of your business with
feature-rich VoIP for your budget.

LESAVOY
& BUTZ
SEITZ
LLC
ATTORNEYS AT LAW

Practical lawyers.
Peace-of-mind Solutions.

610.530.2700

LesavoyButz.com

THE LEHIGH VALLEY'S FIRST SOURCE FOR NEWS

THE MORNING CALL



Nacci

Printing, Inc.®

NATURAL FOOD GROUP

✓ Organic ✓ Non GMO ✓ Vegan ✓ Gluten Free
No Added Sugar • No Preservatives • No Additives

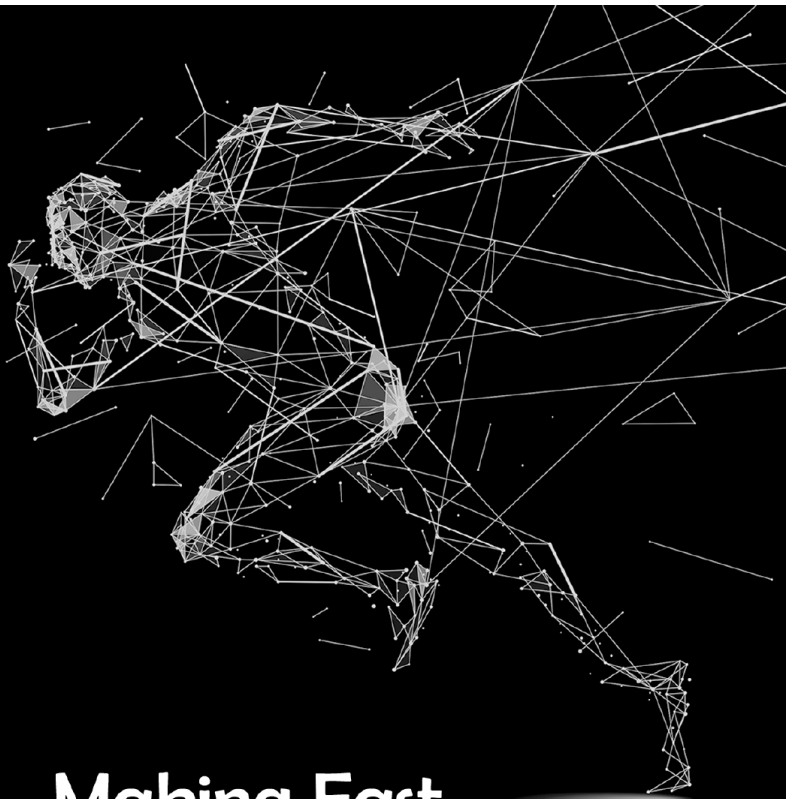
SMART JUICE®
ORGANIC



SMART HARVEST



Our brands are supported locally through our Whitehall, PA headquarters.



**Making Fast
Connections...**

 **PenTeleData**[®]
fiber networks

www.penteledata.net | 855-22FIBER
(34237)



We are proud to support the
Lehigh Valley Chamber of Commerce's
Annual Meeting Experience & Awards Show.

515 West Hamilton Street, Suite 502 | Allentown, PA 18101 | 610.391.1800

www.norrismclaughlin.com



Red Robin.
CATERING

Are You Ready for the
HOLIDAYS?
We Deliver. You Enjoy. YUMMM!®

RECEIVE 10% OFF your next Catering Order,
when you mention this ad.



Valid for call-in orders only. Offer expires 12/31/21.
Valid at participating PA locations only, excluding
Valley Gate & Oxford Valley locations.

CALL-IN YOUR ORDER
Megan Young: (484) 425-0291
Jamie Keefer: (610) 737-0497

SWEET CAUSE

A portion of **EVERY Dessert Tray** sold will be donated to the

[HTTPS://WWW.PCFLV.ORG/](https://www.pcflv.org/)

 **PCFLV** Pediatric Cancer
Foundation of
the Lehigh Valley



it's
GO
time



TIME TO DINE. SHOP. PLAY. AND STAY.

We continue to proudly sponsor the
Greater Lehigh Valley Chamber of Commerce



WIND CREEK®
BETHLEHEM

**GAMBLING PROBLEM?
CALL 1-800-GAMBLER.**



WORKFORCE BOARD

LEHIGH VALLEY

Visit www.careerlinkehighvalley.org to learn more about our services, or call Michelle Young at 610-841-1009.

Pennsylvania
CareerLinkSM
Lehigh Valley

Comprehensive Center
PA CareerLink® Lehigh Valley

555 Union Boulevard
Allentown, PA 18109



Pennsylvania
CareerLinkSM
Lehigh Valley

Fowler Community Wellness Center
PA CareerLink® Satellite

502 East 4th Street
Bethlehem, PA 18015

Pennsylvania
CareerLinkSM
Lehigh Valley

Easton Center
PA CareerLink® Satellite

27 South 3rd Street
Easton, PA 18042

St Luke's
UNIVERSITY HEALTH NETWORK

St. Luke's Sacred Heart Campus
PA CareerLink® Satellite

325 North 5th Street
Allentown, PA 18102

 **Lehigh Carbon**
COMMUNITY COLLEGE

LCCC Donley Center
PA CareerLink® Satellite

718 West Hamilton Street
Allentown, PA 18101

NORTHAMPTON
COMMUNITY COLLEGE

Northampton Community College
PA CareerLink® Satellite

511 E. Third Street
Bethlehem, PA 18015

AIR PRODUCTS



**ALLIED
BUILDING CORPORATION**

a Scarcia Company

Construction Management

General Contracting

Design / Build

74 W. Broad Street, Suite 200
Bethlehem, PA 18018
Phone (484) 898-1111
Fax (484) 898-1110
www.alliedbuildingcorp.com



**Proudly serving
the Lehigh Valley
since 1997**

AmericanBank

4029 West Tilghman Street
Allentown, PA 18104
610.366.1800

AMBK.com

Member FDIC

B | BRAUN
SHARING EXPERTISE



Because B. Braun

Patients are safe. Clinicians are protected. The environment is healthy.

B. Braun Medical Inc. is proud to support the Lehigh Valley Chamber of Commerce.

bbraunusa.com

©2021 B. Braun Medical Inc., Bethlehem, PA. All rights reserved.

BEAR CREEK
MOUNTAIN RESORT
& CONFERENCE CENTER

LESS MILES. MORE SMILES.

Visit BCMR.com to plan your winter getaway.

📍 [bear_creek](https://www.instagram.com/bear_creek)

Quality Since 1960

BURKHOLDER'S

Heating & Air Conditioning, Inc.

The Local Heating & Cooling Experts for Over 60 Years

610-816-6889
383 Minor Street
Emmaus, PA 18049
www.burkholders-hvac.com

PA 011533

Your success is our success.

ESSA Bank & Trust proudly supports great communities built by great businesses!

ESSA

Bank & Trust



essabank.com

FACTORY

WE MAKE VALUE

In another year of uncertainties, the support of the Chamber and its efforts to keep our Lehigh Valley business community vibrant have been unwavering. Thank you!

OUR BRAND PARTNERS



Visit factory-llc.com for more information.

Fidelity BANK

Experience the Exceptional.



Meet with a banker
at any of our local offices



Visit us online
at bankatfidelity.com



Give us a call
at 1.800.388.4380



Fidelity Bank has built a strong history as trusted advisors to clients served, and is proud to be an active member of the community. With multiple branches located throughout Northeastern Pennsylvania and the Lehigh Valley, Fidelity Bank offers full-service Trust & Investment Departments, a mortgage center, and an array of personal and business banking products and services. The Bank provides 24-hour, 7 day a week service to clients through a variety of digital banking tools, branch offices, online at www.bankatfidelity.com, and through the Customer Care Center at 1-800-388-4380.



MEMBER FDIC

First Commonwealth

FEDERAL CREDIT UNION
BELONG. GROW. THRIVE.



Empowering the pursuit of financial happiness.

610.821.2403
www.firstcomcu.org

INSURED BY NCUA. EQUAL OPPORTUNITY LENDER.

FirstLight

IS PROUD TO SUPPORT
The Greater Lehigh Valley Chamber

For more than 20 years, FirstLight has been serving the communications needs of savvy businesses in the Northeast and mid-Atlantic. We have a complete portfolio of fiber-optic communications services designed specifically with your business needs in mind.

- Internet
- Data Bandwidth
- Dark Fiber
- Unified Communications
- Data Center
- Cloud Computing
- Managed Services
- Hardware
- Construction Services

Learn how we can help you
build your business!

800-461-4863 | www.FirstLight.net

LET'S COUNT ON EACH OTHER.

Investing in our community.

Proudly supporting
Lehigh Valley
Chamber of Commerce

Fulton *FORWARD*®

Fulton Bank

1.800.FULTON.4 | fultonbank.com

Fulton Bank, N.A. Member FDIC. Fulton Bank is not affiliated with Lehigh Valley Chamber of Commerce.

BUNDLE & SAVE!

Bundle Internet and Business Phone.

Call today!
610-625-9239



SERVICE ELECTRIC BUSINESS

610.625.9239

 SEBusinessInfo@sectv.com

Expertise. Innovation. Compassion.



Good Shepherd's compassionate rehabilitation experts guide all ages and stages back to everyday life after injury, illness or surgery.


GOOD SHEPHERD
REHABILITATION

1-888-44-REHAB • GoodShepherdRehab.org

Highmark Blue Shield
 is proud to support
 the
 Greater Lehigh Valley
 Chamber of Commerce

You lead. You deliver. You improve.



HIGHMARKBLUESHIELD.COM

Highmark Blue Shield is an independent licensee of the Blue Cross and Blue Shield Association.

Re-engage and Unify
 Your Workforce through Well-Being



Populytics.com/Unify



iHeart MEDIA
 A PROUD LEHIGH VALLEY
 CHAMBER MEMBER

**WANT TO
 GROW YOUR
 BUSINESS?**

BE HEARD ON



95.1ZZO

**PODCAST
 AM 1470**

Contact **Lisa DiMartini**
lisadimartini@iheartmedia.com



**Shaping the
 future of real
 estate for a
 better world**

JLL | Jones Lang LaSalle

Property Management

1495 Valley Center Parkway, Suite 100
 Bethlehem, PA 18017

+1 484 635 3300 jll.com/philadelphia

LAN^{ta}

Making it Easy



LANTA supports community growth and expansion throughout the Lehigh Valley.

LAN^{ta}Bus

LAN^{ta}Flex

LAN^{ta}Van

THANK YOU CHAMBER!

FROM:



LET'S TALK BUSINESS.

WE'RE HERE TO HELP YOUR BUSINESS THRIVE.

Open an account today.*

▶ **MEMBERS1ST.ORG**

M^{1st}

MEMBERS 1st
FEDERAL CREDIT UNION

*MUST MEET CURRENT ELIGIBILITY REQUIREMENTS.
FEDERALLY INSURED BY NCUA. 9-20-018

New Tripoli Bank
Because people are more valuable than money.

Proud Supporter of the

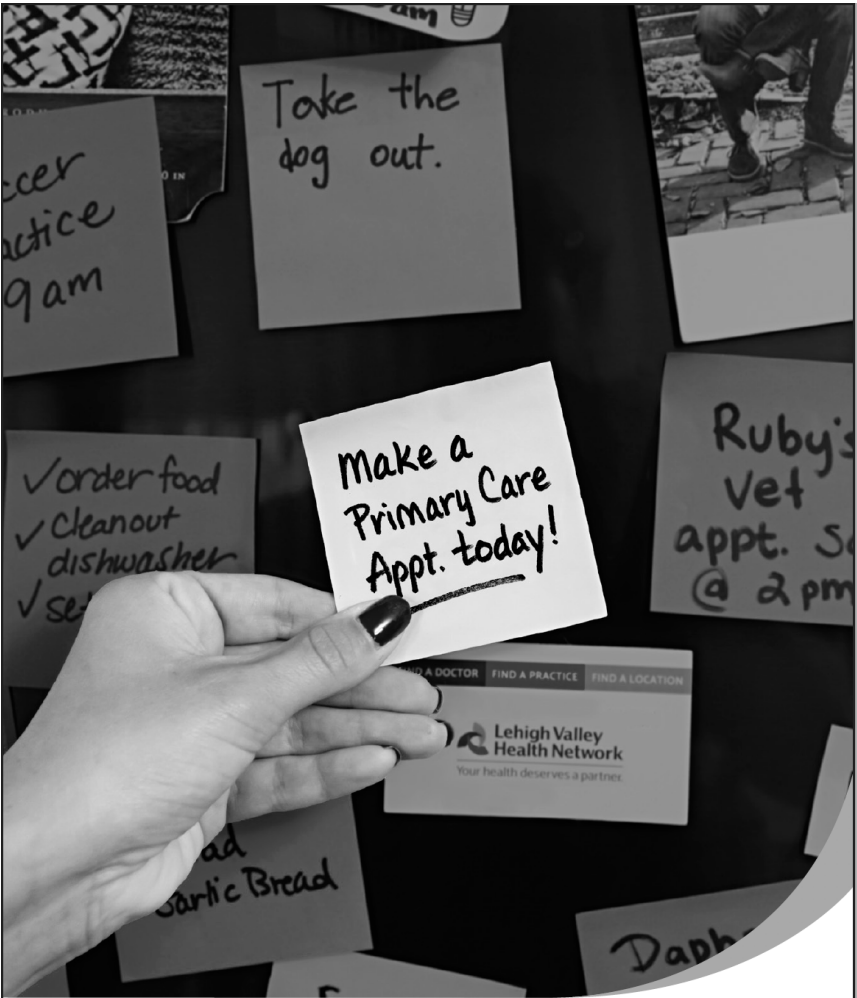


Greater Lehigh Valley Chamber of Commerce Annual Meeting Experience & Award Show

888-298-8821
www.newtripolibank.net

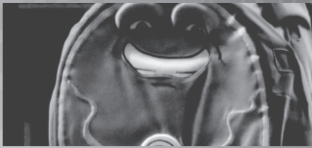
FDIC





Lehigh Valley Health Network

Your health deserves a partner.



BE A PART
OF ALL THE
FUN!



610-841-PIGS

IRONPIGSBASEBALL.com

We're more than our 275+ globally recognized degrees:

- Workforce Retention and Development Programming
- SHRM-CP and SHRM-SCP Credentialing
- LaunchBox Business Accelerator Program
- Digital Marketing Certificate
- SAGE Lecture Series for Seniors
- Arts Project Programs

WE ARE ...
lehighvalley.psu.edu



PennState
Lehigh Valley

Putting YOU First!

At People First, we are committed to our communities and the credit union's philosophy of People Helping People



 **People First**

PeopleFirstCU.org

Today is an opportunity to help business succeed.



Make today the day.®

©2021 The PNC Financial Services Group, Inc. All rights reserved. PNC Bank, National Association. Member FDIC

CON PDF 0618-0106



You do so much to take care of everyone, let PSECU help you take care of your finances.

For more information and to join, visit psecu.com/member or call 800.237.7328, ext. 2755.

PSECU™



CONGRATULATIONS

TOM GROVES
Volunteer of the Year

BOYLE CONSTRUCTION MANAGEMENT
Business of the Year

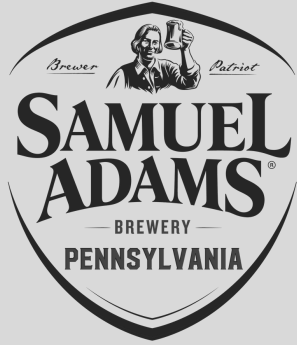
AND MILESTONE AWARD HONOREES:

- *The Crayola Experience*
- *Lehigh Valley Planning Commission*
- *PPL Electric Utilities*

We are a proud supporter of the Greater Lehigh Valley Chamber of Commerce.

RockefellerGroup.com





We're honored to sponsor the Greater Lehigh Valley Chamber of Commerce Annual Event and Awards Ceremony.



Truist Bank, Member FDIC. © 2021 Truist Financial Corporation. Truist, the Truist logo and Truist Purple are service marks of Truist Financial Corporation.



UNIVEST[®]
BANKING | INSURANCE | INVESTMENTS
Member FDIC

 univest.net

 877.723.5571

**FINANCIAL SOLUTIONS
FOR YOUR LIFE**



FIRST TRUST BANK

Serving the Lehigh Valley since 1974, Firsttrust is focused on providing world-class customer service and cultivating prosperity for our customers and the communities we serve.

We look forward to providing reliable financial solutions and empower your success.

Mark McLaughlin, SVP
Business Banking
mmclaughlin@firsttrust.com

Holly Thomas, VP
Cedar Crest Branch
hthomas@firsttrust.com



Consumer
Banking



Business
Banking



Real Estate
Financing



Treasury
Management
and more



liquid

DIGITAL MARKETING • TECHNOLOGY
EXPERIENCE DESIGN

 liquidint.com



*Penn State Lehigh Valley
Lehigh Valley Building Expansion*

Building a brighter future.

butz.com

ALVIN H. BUTZ 
CONSTRUCTION MANAGER



CONGRATULATIONS
BOYLE CONSTRUCTION
FOR BEING NAMED
BUSINESS OF THE YEAR



barryisett.com | 610.398.0904

YOU'LL BE...

Surprised

by the number of programs offered




Keep on track with your educational goals close to home and for a fraction of the price. With faculty committed to your success and classes offered in a variety of formats, LCCC is the best choice for your future, whether it's to transfer or train for a career.

LEARN MORE

LCCC.edu | 610.799.1575 | Admissions@LCCC.edu

**Lehigh Carbon
COMMUNITY COLLEGE**



Together, We Can Do
So Much More

We're Glad to Be with
You Again

sodexo 



SOCIAL



MARKETING & PR

SOCIAL MEDIA • PR • NON-PROFITS
SMALL BUSINESS • MID SIZE • WOMEN-
OWNED • MARKETING • BRANDING
EVENTS • DIGITAL LEHIGH VALLEY
SOCIAL MEDIA • PR • NON-PROFITS
SMALL BUSINESS • MID SIZE • WOMEN-
OWNED • MARKETING • BRANDING
EVENTS • DIGITAL • LEHIGH VALLEY

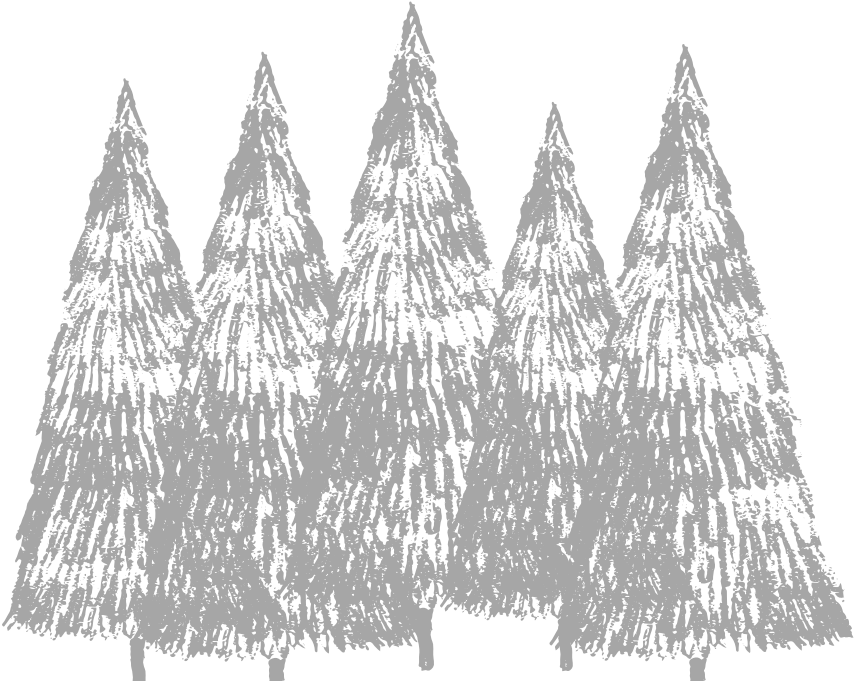


socialtmarketing.com

'tis the season

for tree lightings throughout the Lehigh Valley!

Thursday, November 18	Whitehall Area
Friday, November 19	Bethlehem
Saturday, November 27	Southern Lehigh (Coopersburg)
Monday, November 29	Phillipsburg
Friday, December 3	Slatington
Saturday, December 4	Downtown Allentown
Sunday, December 5	Greater Northern Lehigh (Lehigh Township)
Friday, December 10	Nazareth Area
Sunday, December 12	North Whitehall Township



BUSINESS MATTERS

MONDAY NIGHTS
AT 7:30



Save the Date

SNOW BALL 2022

SATURDAY, FEBRUARY 26

BENEFITING:



Lehigh County
Humane Society
"A Life Saving Animal Shelter"

6:00-10:00PM


ASTER EVENT CENTER

HYATT PLACE HYATT HOUSE HOTEL

621 GRANGE RD, ALLENTOWN, PA 18106

Business Council 
GREATER LEHIGH VALLEY CHAMBER OF COMMERCE

The Chamber 
GREATER LEHIGH VALLEY CHAMBER OF COMMERCE



**More yesses,
fewer no's.**

Going the extra mile.

Capital 

Capital Blue Cross is an Independent Licensee of the Blue Cross Blue Shield Association.