



**WORKFORCE  
BOARD**

LEHIGH VALLEY

# **Lehigh Valley Jobs Outlook**

Greater Lehigh Valley  
Chamber of Commerce Economic Outlook  
January 24, 2023

Nancy Dischinat, Executive Director  
Workforce Board Lehigh Valley  
555 Union Boulevard, Allentown, PA 18109  
Phone: 610-841-1122 | Email: [ndischinat@workforcelv.org](mailto:ndischinat@workforcelv.org)

# Lehigh Valley Jobs Outlook

362,300 in labor force

4 percent or 14,400 unemployed

3,892 on unemployment

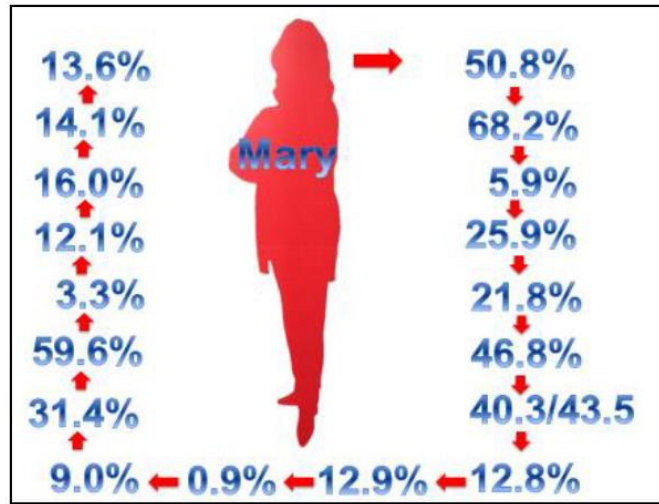
15,687 employers

Average wage \$25.76

# Top Workforce Facts

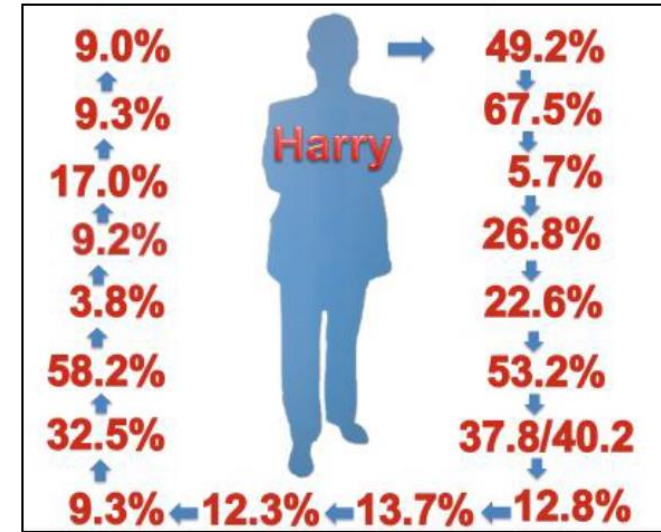
1. Employers are...
2. Every widget coming out of high school...
3. Employment and workers are...
4. Workers want to...
- 5.
- 6.
- 7.
- 8.
- 9.
- 10.

**MARY**  
Represents average adult workforce in Lehigh Valley



- Mary makes up 50.8% of Lehigh Valley's population
- Mary is 68.2% White, 5.9% African American, and 25.9% Other Race
- Mary is 21.8% Hispanic
- Mary makes up 46.8% of labor force
- Her median age in Lehigh County is 40.3 and 43.5 in Northampton County
- 12.8% are in 50-59 range; however, the largest cohort is 10-19 age range at 12.9%
- 0.9% are Veterans
- 9.0% which are 25 years and older have less than a High School education
- 31.4% have a High School diploma or equivalent
- 59.6% have at least some college experience or a higher degree
- Her population grew by 3.3% from 2016 to 2021
- 12.1% are at poverty level or below
- The largest occupational group Mary belongs to is Office and Administrative Support occupations at 16.0%, followed by Education, Legal, Community Service, Arts, and Media occupations at 14.1%, and Management, Business, Financial occupations 13.6%

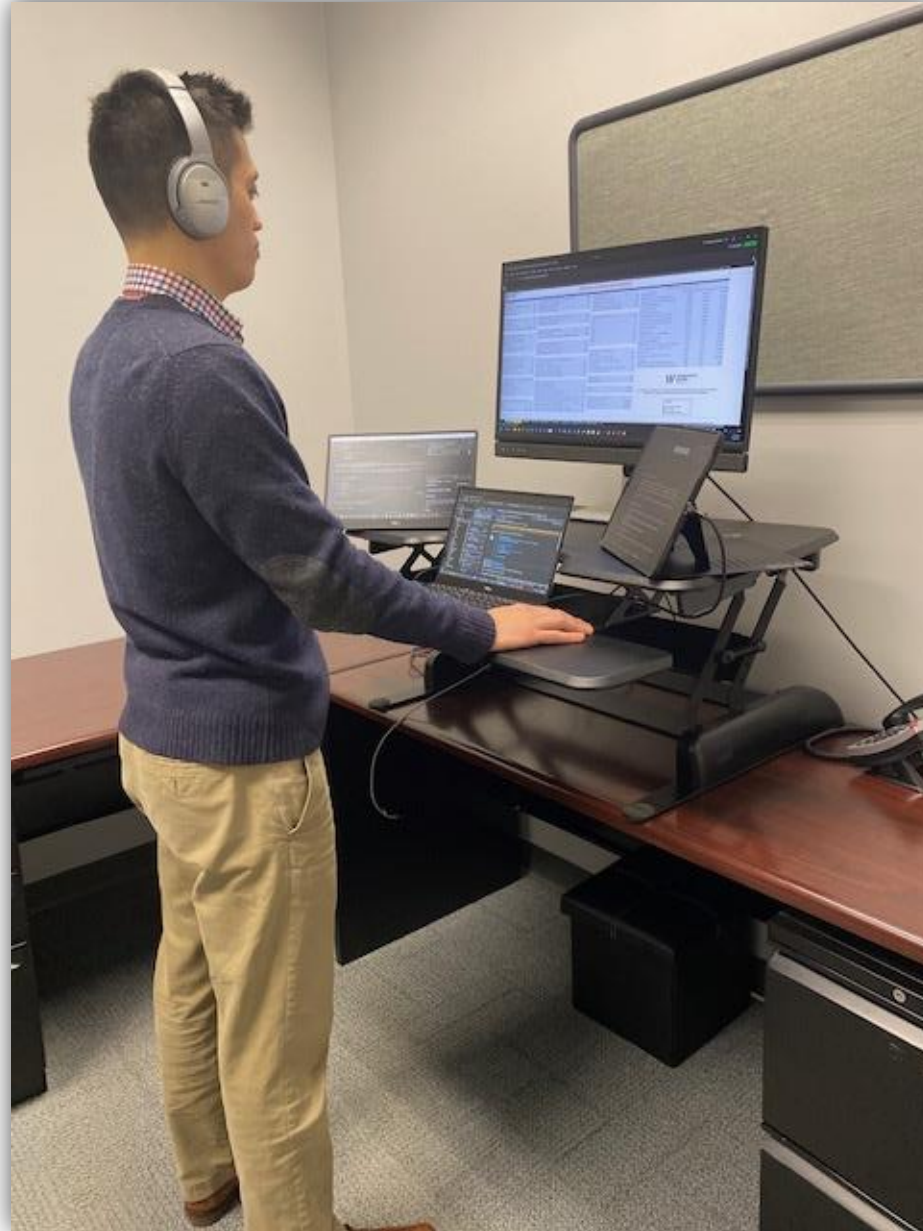
**HARRY**  
Represents average adult workforce in Lehigh Valley



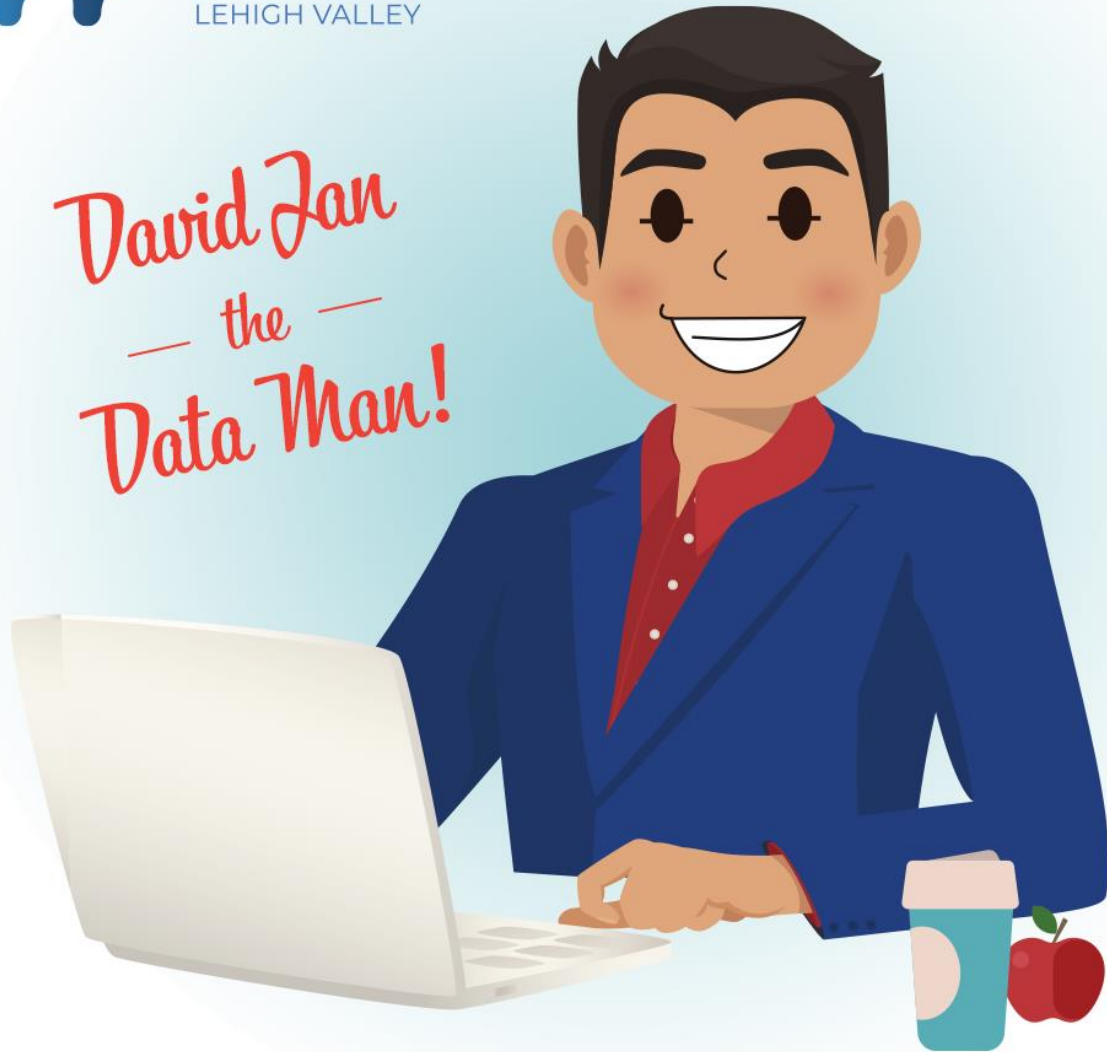
- Harry makes up 49.2% of Lehigh Valley's population
- Harry is 67.5% White, 5.7% African American, and 26.8% Other Race
- Harry is 22.6% Hispanic
- Harry makes up 53.2% of labor force
- His median age in Lehigh County is 37.8 and 40.2 in Northampton County
- 12.8% are in 50-59 age range; however, the largest cohort is 30-39 age range at 13.7%
- 12.3% are Veterans
- 9.3% which are 25 years and older have less than a High School education
- 32.5% have a High School diploma or equivalent
- 58.2% have at least some college experience or a higher degree
- His population grew by 3.8% from 2016 to 2021
- 9.2% are at poverty or below
- The largest occupational group Harry belongs to is Management, Business, and Financial at 17.0%, followed by Computer, Engineering, and Science occupations at 9.3%, and Production occupations 9.0%



# David Jan, Data Scientist/Economist



*David Jan  
— the —  
Data Man!*



**David Jan**  
**Data Scientist/Economist**  
**610-264-4544**  
**[djan@lvpc.org](mailto:djan@lvpc.org)**

# Interactive Workforce Data Dashboard

Economy (LV) <sup>1,2</sup>		Unemployment Statistics (LV) - (November 2022)		Demographics (LV) <sup>9</sup>		CWIA QCEW Annual Averages (2021)			
Total Nominal GDP (\$B) - 2021 <a href="#">Graph</a>	43.9	Labor Force (in thousands) <sup>6</sup>	362	Total Population Est. (2021)	689	Industry (NAICS) <sup>12</sup>		Employment Employment % Avg Annual Wages	
Lehigh County	26.4	Employed (in thousands) <sup>6</sup>	348	Lehigh County (in thousands)	376	62-Health Care and Social Assistance	58,535	19.2%	65,245
Northampton County	17.5	Unemployed (in thousands) <sup>6</sup>	14.4	Northampton County (in thousands)	314	48-49-Transportation and Warehousing	36,311	11.9%	52,180
				Labor Force Participation Rate (2020)	64%	31-33-Manufacturing	34,500	11.3%	75,362
						44-45-Retail Trade	31,251	10.3%	34,513
Total Real GDP (\$B) - 2021 <a href="#">Graph</a>	36.8	<b>Unemployment Rates - (Seasonally Adjusted)<sup>6</sup></b> <a href="#">Graph</a>		<b>Workforce Age (LV) (2022 Q1)</b> <a href="#">Graph</a> <sup>10</sup>		61-Educational Services	24,149	7.9%	58,075
Lehigh County	22.3	Lehigh Valley - (November 2022)	4.0%	14-18	3%	72-Accommodation and Food Services	21,340	7.0%	24,175
Northampton County	14.3	Month over Month Change	0.3%	19-21	4%	56-Administrative and Waste Services	20,122	6.6%	44,718
Year over Year % Change (Real GDP) <sup>2,3</sup>	6.3%			22-24	5%	54-Professional and Technical Services	12,760	4.2%	86,094
				25-34	21%	42-Wholesale Trade	11,596	3.8%	85,486
<b>Targeted Industry Sectors (LV)</b>				35-44	21%	23-Construction	11,149	3.7%	71,712
Health Care & Social Assistance				45-54	20%	81-Other Services, Ex. Public Admin	8,250	2.7%	37,937
Transportation & Warehousing				55-64	19%	52-Finance and Insurance	8,027	2.6%	98,356
Manufacturing		<b>Unemployment Continued Claims<sup>7</sup></b> <a href="#">Graph</a>		65-99	7%	92-Public Administration	7,523	2.5%	63,188
Professional & Technical Services		Lehigh County (WE 12/24/22)	2,339			55-Management of Companies and Enterprises	6,955	2.3%	151,007
Finance & Insurance		Northampton County (WE 12/24/22)	1,553	<b>Workforce Race (LV) (2022 Q1)</b> <a href="#">Graph</a> <sup>10</sup>		71-Arts, Entertainment, and Recreation	4,530	1.5%	26,228
		Total Lehigh Valley (WE 12/24/22)	3,892	White Alone	84%	51-Information	3,341	1.1%	73,090
<b>Employers (LV) - 2021</b>				Black or African American Alone	10%	53-Real Estate and Rental and Leasing	2,951	1.0%	57,000
Establishments (in thousands) <sup>3,4</sup>	15.7	<b>Workforce Education Attainment (LV) - (2022 Q1)</b>		American Indian or Alaska Native Alone	1%	22-Utilities	1,317	0.4%	100,180
Total Employees (in thousands) <sup>4</sup>	302	Less than high school	11%	Asian Alone	4%	11-Agriculture, Forestry, Fishing & Hunting	N/A	N/A	N/A
Avg Employees per Establishment	19	High school or equivalent, no college	24%	Native Hawaiian or Other Pacific Islander Alon	0%	21-Mining, Quarrying, and Oil and Gas Extractiv	N/A	N/A	N/A
Avg Hourly Wage - 2021	25.76	Some college or Associate degree	27%	Two or More Race Groups	2%				
Year over Year Hourly Wage %	4.7%	Bachelor's degree or advanced degree	24%						
		Educational attainment not available	13%	Hispanic/Latino	16%				
<b>Top Occupations by Job Postings (LV) - (Nov-22)</b>				Not Hispanic/Latino	84%				
1.Retail Salespersons		<b>Education System (LV)<sup>8</sup></b>							
2.Registered Nurses		School Districts (2021-2022)	17	Female	50.7%				
3.Laborers and Freight Movers		Charter Schools (2021-2022)	12	Male	49.3%				
4.Manufacturing Sales		Career and Technical Schools (2021-2022)	3						
5.Managers, All Other		Community Colleges / 4-Year Institutes	17	<b>Workforce Commuting (2019)</b> <a href="#">Graph</a> <sup>11</sup>					
		PreK-12 Student Enrollments (In Thousands) (2021-202	101	Commute Out, Live in LV	103,906				
<b>Online Job Postings (LV) - (In thousands)<sup>5</sup></b>		High School Graduates (In Thousands) (2020-2021) <a href="#">Graph</a>	7.2	Commute In, Live Outside LV	101,947				
Nov-22	14.1	4 Year Graduation Rate % (2020-2021)	90%	Work and Live in LV	197,559				
Nov-21	17.4	College Bound Students (In Thousands) (2020-2021)	4.8						
YoY Percentage Change	-19.2%	% College Bound of High School Graduates (2020-2021) <a href="#">Graph</a>	67%						

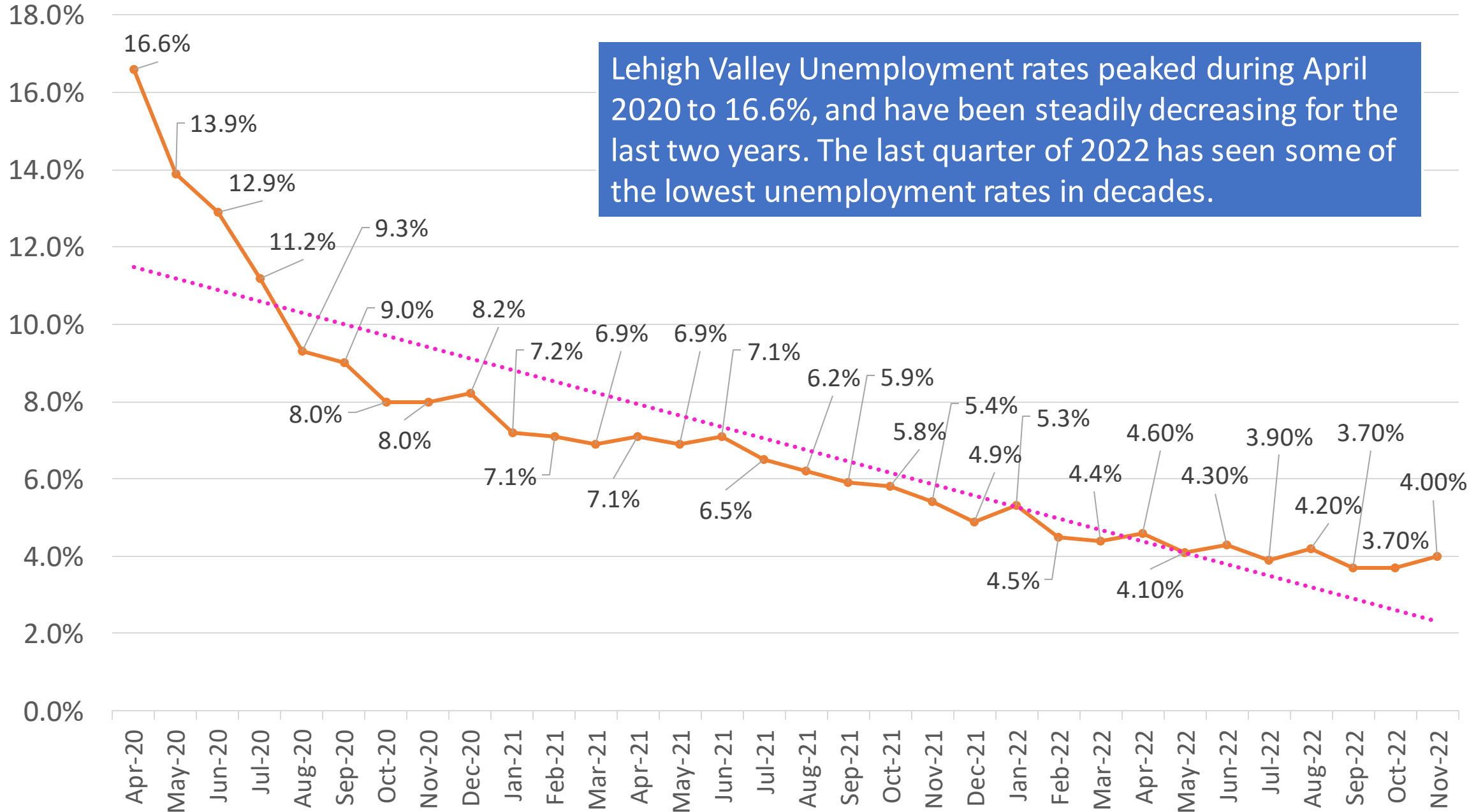


*Our mission is to ensure an employer demand-driven world class workforce system aligned with economic development, education and the community.*

**Legend:**

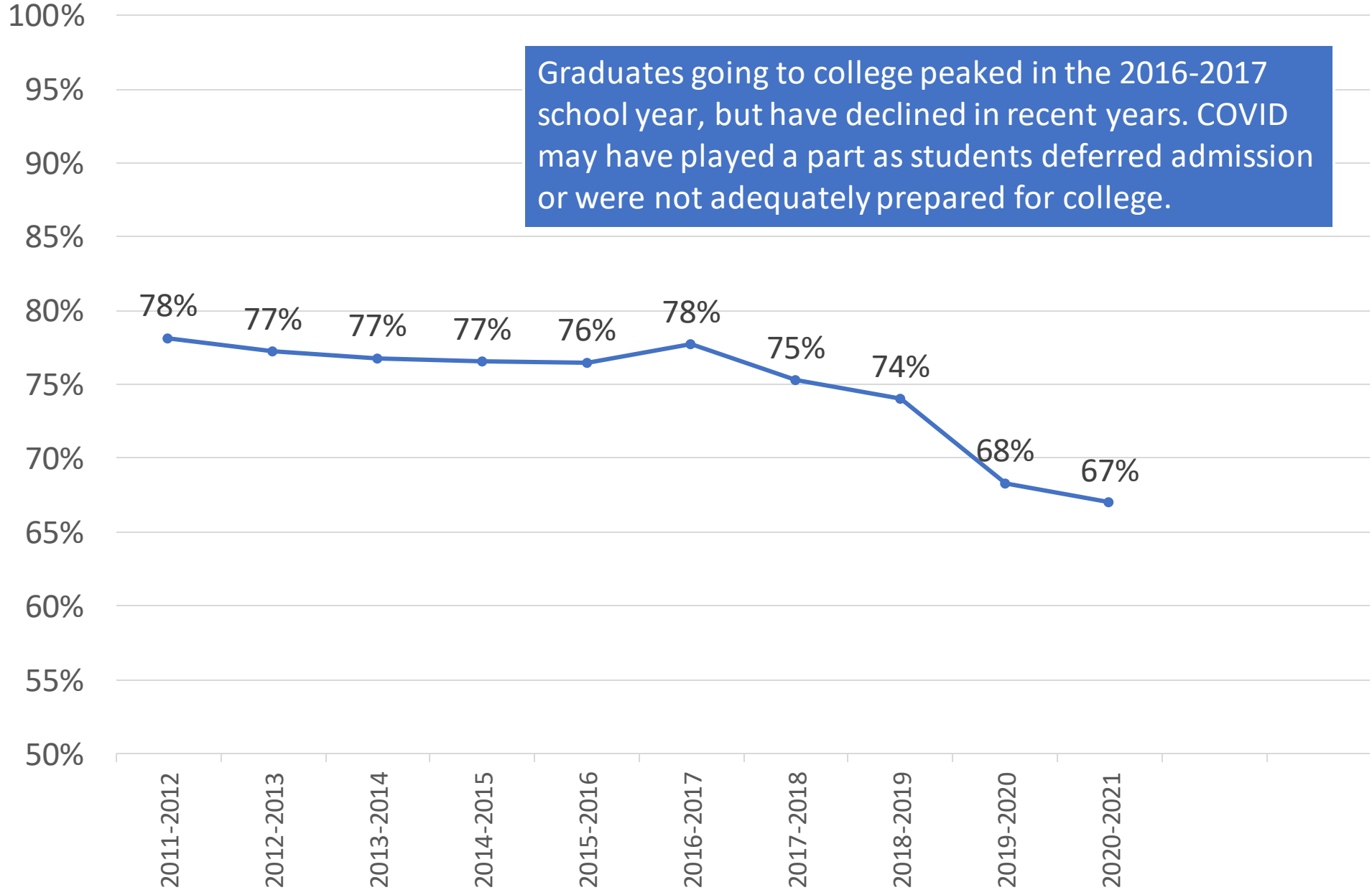
- Favorable Change
- No Change
- Unfavorable Change

# Lehigh Valley Unemployment Rate by Month





# % College Bound Students by School Year



**LEHIGH VALLEY  
INTERACTIVE DATA DASHBOARD**

PROVIDES YOU WITH INFORMATION ON

**Economy**  
**Targeted Industry Sectors**  
**Employers**  
**Top Occupations by Job Postings**  
**Online Job Postings**  
**Unemployment Statistics**  
**Unemployment Rates**  
**Unemployment Continued Claims**  
**Workforce Education Attainment**  
**Education System**  
**Demographics**  
**Workforce Age**  
**Workforce Race**  
**Workforce Commuting**  
**Quarterly Census of Employment and Wages  
(QCEW)**  
**Center for Workforce Information & Analysis  
(CWIA)**

**Scan for the full Interactive Data Dashboard**



[www.lvwib.org/data](http://www.lvwib.org/data)

**Questions? Comments?**

**David Jan**

**Data Scientist/Economist**

**610-264-4544**

**djan@lvpc.org**



**Save  
the  
Date**

**ENGAGE EMPLOYER  
ROUNDTABLE  
All About the Data!**

**February 16, 2023 2:00 pm**





**DON'T BE A FRAIDY CAT!**